



**DAYANG
PARKING**

**ENTERPRISE
PRODUCTS**

Address: NO.3777, Yongjun Road, Weicheng
District, Weifang, China
Tel: 0086-536-7671266
Web: www.my-parking.com
Email: dayangparking@163.com



Limited space ■■ Unlimited parking



CONTENTS

DAYANG PARKING

ENTERPRISE PRODUCTS

Part One Vertical lifting parking system ---- PCS

- I Circular type vertical lifting parking system (10 floors)
- II Cabinet type vertical lifting parking system (10 floors)
- III Comb type vertical lifting tower parking system (35 floors)
- IV Multi-row vertical lifting parking system (25 floors)

Part Two Plane moving parking system ---- PPY

- I Traditional plane moving parking system (6 floors)
- II New plane moving parking system (15 floors)

Part Three Stacking parking system ---- PXD

- I traditional stacking parking system (6 floors)
- II New stacking parking system

Part Four Vertical-horizontal parking system ---- PSH

- I Vertical-horizontal parking system (-3 to +18 floors)
- II Vertical-horizontal parking system (4-8 floors)
- III Vertical-horizontal parking system (2-3 floors)

Part Five Easy parking car lift ---- PJS

- I Pit lifting parking system (-3+1)
- II Easy parking car lift

Part Six Bus parking system

Part Seven Vertical rotary parking system ---- PCX

- I traditional stacking parking system (6 floors)
- II New stacking parking system

Part eight Car elevator & Turntable

- I Car elevator (3 stations)
- II Car turntable

Part One Vertical lifting parking system ---- PCS

I Circular type vertical lifting parking system (10 floors)

1、Working principle

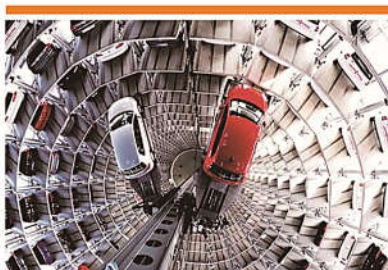
The shape of the parking system is cylinder or multi prism. The structure can be divided in to inner cylinder and outer cylinder. The inner cylinder is the lifting channel which consists of lifter, turntable, layer levelness system and carrier. The outer cylinder is the parking area which is under radiate arrangement. 6-12 car spaces can be set at each floor.

2、Characteristics

- 1 Scope of application: Outdoor multi-level parking system and indoor concrete type well type parking system.
- 2 Drive mode: Hydraulic pulley driven by large drive ratio. The hydraulic system adopts pump group pumping station. Every pump can become the backup of other pumps. It is low noise, high working and safety.
- 3 Car exchanging: comb type carrier or tire gripping carrier.
- 4 Layouts: ground layout, half ground half under underground layout and underground layout.
- 5 Entrance observation mirror, voice prompts, LED display are equipped.

3、Parameters

Drive mode	hydraulic & wire rope	
Car size (L×W×H)	≤5.3m×1.9m×1.55m	
	≤5.3m×1.9m×2.05m	
Car weight	≤2350kg	
Motor power & speed	Lift	30kw Max 45m/min
	Turn	2.2kw 3.0rpm
	Carry	1.5kw 40m/min
Operation mode	IC card/ key board/ manual	
Access mode	Forward in, forward out	
Power supply	3 phase 5 wires 380V 50Hz	



II Cabinet type vertical lifting parking system (10 floors)

1、Working principle

The shape of this parking system is rectangle. The structure is divided into the tunnel and the parking area. The tunnel is the lifting channel. It has the function of lifter, turntable, layer levelness system and carrier. The parking area is set on both side of the tunnel parallel. 4-12 parking spaces can be set on each floor. One or more entrances can be set on the ground floor. The entrance can also be set on the lifting platform. When saving or retrieving the cars, the carrier will carry the cars between the entrance, tunnel and the parking area. The action of lifting, sliding, turning will be finished by the lifter at the same time.

2、Characteristics

- 1 Scope of application: Outdoor multi-level parking system and indoor concrete type well type parking system.
- 2 Drive mode: Hydraulic pulley driven by large drive ratio. The hydraulic system adopts pump group pumping station. Every pump can become the backup of other pumps. It is low noise, high working and safety.
- 3 Car exchanging: comb type carrier or tire gripping carrier.
- 4 Layouts: ground layout, half ground half under underground layout and underground layout.
- 5 Entrance observation mirror, voice prompts, LED display are equipped.

3、Parameters

Drive mode	hydraulic & wire rope	
Car size (L×W×H)	≤5.3m×1.9m×1.55m	
	≤5.3m×1.9m×2.05m	
Car weight	≤2350kg	
Motor power & speed Operation mode	Lift	30kw Max 45m/min
	Slide	2.2kw Max 30m/min
	Turn	2.2kw 3.0rpm
	Carry	1.5kw 40m/min
Access mode	IC card/ key board/ manual	
Power supply	Forward in, forward out	
Car weight	3 phase 5 wires 380V 50Hz	



Part One Vertical lifting parking system ---- PCS



Comb type vertical lifting tower parking system (35 floors)

1、Working principle

The shape of this parking system is rectangle. Single tower is 3 rows design. The structure is divided into lifting channel and parking area. The come type lifter and lifting system is set in the lifting channel. The parking area is on the left and right side of the lifting channel. The entrance is set on the ground floor of the lifting channel. Turn table can also be set at the entrance. When saving or retrieving the cars, the lifter will get the car from the parking spaces through comb exchanging and lift the car to the aim floor. The sliding comb frame will move the car from the parking spaces to the lifting channel. The turntable will turn the cars around for the convenience of driving out.

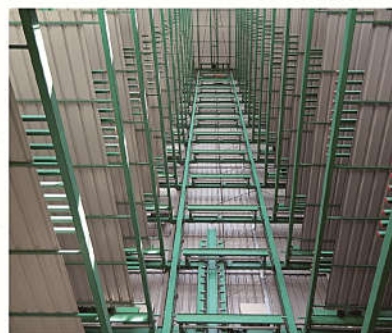
2、Characteristics

- ① Scope of application: Outdoor high level/ super high level parking system and indoor concrete type well type parking system.
- ② Drive mode: Traction wire rope drive mode and frequency control. It is low noise, high working and safety.
- ③ Car exchanging: Comb type car exchanging technique. Able to park and retrieve cars constantly and no need to send back the empty loading plates to make sure high working efficiency.
- ④ Layouts: ground layout and half ground half under underground layout.
- ⑤ Entrance observation mirror, voice prompts, LED display are equipped.
- ⑥ Able to be equipped with electric car charging devices.

3、Parameters

Drive mode	Traction & wire rope, Frequency control	
Car size (L×W×H)	≤5.3m×1.9m×1.55m	
	≤5.3m×1.9m×2.05m	
Car weight	≤2350kg	
Motor power & speed	Lift	22 / 30 kw 70-120m/min
	Slide	0.2kw 9.5m/min
	Turn	2.2kw 3.0rpm
Door size	2.5m×2.2m	
Operation mode	IC card/ key board/ manual	
Access mode	Forward in, forward out	
Power supply	3 phase 5 wires 380V 50Hz	

Limited space ■ Unlimited parking



Multi-row vertical lifting parking system (25 floors)

1、Working principle

The parking system is 4 or more rows design. The structure is divided into lifting channel and parking area. Every floor has an empty car space. A comb type lifter is set in the lifting channel. The cars will be parked on the sliding comb frame. The entrances are located in the ground floor of each lifting channel. Cars will be transported to the aim position through the exchanging between comb lifter and sliding comb frame when saving or retrieving the cars.

2、Characteristics

- ① Scope of application: Outdoor high level parking system, narrow parking area which needs to set the entrance at side and multi form combinatorial parking system.
- ② Drive mode: Hydraulic pulley driven by large drive ratio. The hydraulic system adopts pump group pumping station. Every pump can become the backup of other pumps. It is low noise, high working and safety.
- ③ Sliding system: Adapt to self-driving sliding comb frame driven by double transmission shaft and patent sliding power supply technology. Safe and stable.
- ④ Layouts: ground layout and half ground half under underground layout.
- ⑤ Entrance: ground floor of every lifting channel.
- ⑥ Entrance observation mirror, voice prompts, LED display are equipped.

3、Parameters

Car size (L×W×H)	≤5.3m×1.9m×1.55m	
	≤5.3m×1.9m×2.05m	
Car weight	≤2350kg	
Motor power & speed	Lift	15-22kw Hydraulic speed-regulation 28-42m/min
	Slide	0.2kw 9.5m/min
Operation mode	IC card/ key board/ manual	
Access mode	Forward in, forward out	
Power supply	3 phase 5 wires 380V 50Hz	



Part Two Plane moving parking system ---- PPY

I

Traditional plane moving parking system (6 floors)

1、Working principle

Lift the cars through the lifter which is at fixed position. Move the cars horizontally through the slider on each floor. Achieve the car's longitudinal movement by the carrier.

Type of the carrier: Comb exchanging type and wheel gripping type.

2、Characteristics

- ① Safe, stable and with high automatic degree.
- ② High working efficiency and high space using rate.
- ③ Wide scope of application. It is mainly used to aboveground or underground parking area with large number of car spaces.

3、Parameters

Car size (L×W×H)	≤5.3m×1.9m×1.55m	
	≤5.3m×1.9m×2.05m	
Car weight	≤2350kg	
Motor power & speed	Lift	15kw Max 60m/min
	Slide	2.2kw Max 60m/min
	Turn	2.2kw 3.0rpm
	Carry	1.5kw 40m/min
Operation mode	IC card/ key board/ manual	
Access mode	Forward in, forward out	
Power supply	3 phase 5 wires 380V 50Hz	



Limited space ■ Unlimited parking

DAYANG PARKING Professional Manufacturer

II

New plane moving parking system(15 floors)

1、Working principle

The parking system is 3 or more rows design. The structure is divided into lifting channel, parking area and sliding channel. The lifting channel is placed every another row. Every floor has an empty car space. A comb type lifter is set in the lifting channel. The cars will be parked on the sliding comb frame. The entrances are located in the ground floor of each lifting channel. Cars will be transported to the aim position through the exchanging between comb lifter and sliding comb frame when saving or retrieving the cars. The sliding turntable will finish the task of carrying the cars from the lifting channel to the entrance and turn the cars around at the same time.

2、Characteristics

- ① Scope of application: Outdoor high level parking system, narrow parking area which needs to set the entrance at side and multi form combinatorial parking system.
- ② Drive mode: Hydraulic pulley driven by large drive ratio. The hydraulic system adopts pump group pumping station. Every pump can become the backup of other pumps. It is low noise, high working and safety.
- ③ Sliding system: Adapt to self-driving sliding comb frame driven by double transmission shaft and patent sliding power supply technology. Safe and stable.
- ④ Layouts: ground layout and half ground half under underground layout.
- ⑤ Entrance: ground floor of every car space. Also can be at the side way of 90 degree angle.
- ⑥ Able to be equipped with electric car charging devices.
- ⑦ Entrance observation mirror, voice prompts, LED display are equipped.

3、Parameters

Car size (L×W×H)	≤5.3m×1.9m×1.55m	
	≤5.3m×1.9m×2.05m	
Car weight	≤2350kg	
Motor power & speed	Lift	15-22kw Hydraulic speed-regulation 28-42m/min
	Slide	0.2kw 9.5m/min
	Carry	1.5kw Frequency control 30m/min
	Turn	2.2kw Frequency control 3.0rpm
Operation mode	IC card/ automatic/ half automatic/ manual	
Access mode	Forward in, forward out	
Power supply	3 phase 5 wires 380V 50Hz	



Part Three Stacking parking system ----PXD

I

Traditional stacking parking system (6 floors)

1. Working principle

Achieve the car's vertical and horizontal movement by stacker. Achieve the car's longitudinal movement by carrier. The carrier types: comb type and tire gripping type.

2. Characteristics

- 1 The stacking parking system is of the advantage of space saving, flexible design and easy controlling.
- 2 Easy to park and retrieve. High automatic degree.

3. Parameters

Car size (L×W×H)	≤5.3m×1.9m×1.55m	
	≤5.3m×1.9m×2.05m	
Car weight	≤2350kg	
Motor power & speed	Stacker lift	15kw Frequency control Max: 60m/min
	Stacker slide	5.5kw Frequency control Max: 30m/min
	Carry	1.5kw Frequency control 40m/min
	Turn	2.2kw 3.0rpm
Operation mode	IC card/ key board/ manual	
Access mode	Forward in, forward out	
Power supply	3 phase 5 wires 380V 50Hz	



Limited space ■ Unlimited parking

II

New stacking parking system

1. Working principle

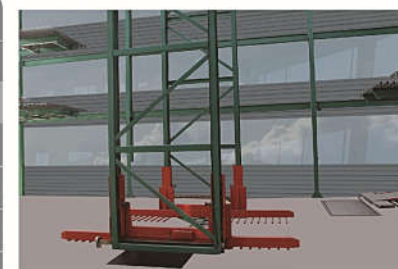
The shape of this parking system is rectangle. The structure is divided into tunnel and parking area. Suspension type stacker is set in the tunnel. This type of stacker has the ability of lifting, sliding and turning. Parking area is set on the left and right side of the tunnel. The entrance is at the parking spaces on the ground floor and the number of the entrance could be one or more. The suspension type stacker is in charge of carrying and turning the cars when saving and retrieving.

2. Characteristics

- 1 Less land occupation and high space using rate.
- 2 Easy to installation and of low price and maintenance cost.
- 3 Flexible layout: Entering and exiting from the front, double side layout; entering and exiting from the front, single side layout; entering and exiting from the side, double side layout; entering and exiting from the side, single side layout.

3. Parameters

Car size (L×W×H)	≤5.3m×1.9m×1.55m	
	≤5.3m×1.9m×2.05m	
Car weight	≤2000kg	
Motor power & speed	Lift	15kw Frequency control Max: 30m/min
	Slide	2.2kw Frequency control Max: 30m/min
	Vertical shift	2.2kw Frequency control Max: 30m/min
	Turn	2.2kw Frequency control 3.0rpm
Operation mode	IC card/ key board/ manual	
Access mode	Forward in, forward out	
Power supply	3 phase 5 wires 380V 50Hz	



I

Vertical-horizontal parking system (-3 to +18 floors)

1、Working principle

Aboveground layout: The equipment is designed with multi-floor and multi-row. Each floor is designed with a space as an exchanging space. All spaces can be lifted automatically except the spaces in the first floor. All the spaces can slide automatically except the spaces in the top floor. When a car is needed to be parked or released, all spaces under this car space will slide to the empty space and forms a lifting channel under this space. In this case, the space will go up and down freely. When it reaches the ground, the car will go out and in easily.

Half aboveground, half underground layout: It's a combination of vertical-horizontal parking system and pit lifting parking system. The over ground part is a vertical-horizontal parking system. And the underground part is a pit lifting parking system. When a car in the ground floors is needed to be parked or released, the over ground parts need to move to form a lifting channel.

2、Characteristics

- ① Less land occupation, high space using rate.
- ② Different types of packing like full packing, half packing, easy packing and naked packing are available.
- ③ Low building cost and low maintenance cost.
- ④ Running smoothly and fleetly, low noise, short accessing time.
- ⑤ Multiple safety protection like anti-fall, anti-collision, anti-overload and a series of safety protection device.
- ⑥ Adopted hydraulic speed regulation technology, work smoothly.

3、Parameters

Drive mode	hydraulic	
Car size (L×W×H)	sedan≤5m ×1.85m ×1.55m	
	SUV≤5m ×1.85m ×2.05m	
	Large sedan≤5.3m ×1.95m ×1.55m	
Car weight	≤2000kg or ≤2300kg	
Motor power & speed	Lift	4kw/5.5kw/11kw/15kw 6-21m/min
	Slide	0.2kw 7.5 m/min
Operation mode	IC card/ key board/ manual	
Access mode	Both forward & backward	
Power supply	3 phase 5 wires 380V 50Hz	

Limited space ■ Unlimited parking



II

Vertical-horizontal parking system (4-8 floors)

1、Working principle

Aboveground layout: The equipment is designed with multi-floor and multi-row. Each floor is designed with a space as an exchanging space. All spaces can be lifted automatically except the spaces in the first floor. All the spaces can slide automatically except the spaces in the top floor. When a car is needed to be parked or released, all spaces under this car space will slide to the empty space and forms a lifting channel under this space. In this case, the space will go up and down freely. When it reaches the ground, the car will go out and in easily.

Half aboveground, half underground layout: It's a combination of vertical-horizontal parking system and pit lifting parking system. The over ground part is a vertical-horizontal parking system. And the underground part is a pit lifting parking system. When a car in the ground floors is needed to be parked or released, the over ground parts need to move to form a lifting channel.

2、Characteristics

- ① Less land occupation, high space using rate.
- ② Different types of packing like full packing, half packing, easy packing and naked packing are available.
- ③ Low building cost and low maintenance cost.
- ④ Running smoothly and fleetly, low noise, short accessing time.
- ⑤ Multiple safety protection like anti-fall, anti-collision, anti-overload and a series of safety protection device.
- ⑥ Adopted hydraulic speed regulation technology, work smoothly.

3、Parameters

Drive mode	hydraulic	
Car size (L×W×H)	sedan≤5m ×1.85m ×1.55m	
	SUV≤5m ×1.85m ×2.05m	
	Large sedan≤5.3m ×1.95m ×1.55m	
Car weight	≤2000kg or ≤2300kg	
Motor power & speed	Lift	5.5kw/11kw/15kw 6-21m/min
	Slide	0.2kw 7.5 m/min
Operation mode	IC card/ key board/ manual	
Access mode	Both forward & backward	
Power supply	3 phase 5 wires 380V 50Hz	





Vertical-horizontal parking system (2-3 floors)

1. Working principle

The equipment is designed with multi-row. An exchange space is set in the ground floor. Cars in the ground floor can be parked and released directly. Spaces on the ground floor can move horizontally to form the lifting channel for the second floor. The spaces on the second floor must move to the ground floor before parking and releasing cars. When users need to park or release cars on the second floor, all spaces on the ground floor, from the space under it to the exchange space, move toward the exchange space to form a lifting channel under the aim space. Then the aim space can move down to the ground floor for cars parking and releasing.

2. Characteristics

- 1 floors vertical-horizontal parking system can be divided into 5 types: hydraulic one cylinder one plate, motor roller gear box, motor chain gear box, hydraulic back cantilever, and hydraulic one cylinder multi-plate.
- 2 floors vertical-horizontal parking system can be divided into 3 types of drive mode: motor roller gear box, motor chain gear box and hydraulic.
- 3 floors vertical-horizontal parking system can be divided into 3 types of drive mode: motor roller gear box, motor chain gear box and hydraulic.
- Technical advantages: high speed, overload protection, automatic control system with fault diagnosis, can go down by car dead weight, energy conservation.

3. Parameters

Drive mode		hydraulic	motor
Lifting mode		1 cylinder 1 plate/ 1 cylinder multi-plate/ back cantilever	Roller wire rope / sprocket chain
Car size (L×W×H)		sedan≤5m×1.85m×1.55m	
		SUV≤5m×1.85m×2.05m	
Car weight		≤2000kg	
Motor power & speed	Lift	4kw/5.5kw 8-12m/min	2.2kw 5.4m/min
	Slide	0.2kw 7.5 m/min	
Operation mode		IC card/ key board/ manual	
Access mode		Both forward & backward	
Power supply		3 phase 5 wires 380V 50Hz	



Limited space ■ Unlimited parking

Part Five Easy parking car lift ----PJS



Pit lifting parking system (-3+1)

1. Working principle

All the spaces of top, middle and bottom, four or three in total, are united and lift together. Usually, two or three spaces of the middle and bottom are underground in the pit. The top spaces are in the same line with ground for cars parking in and out directly. Cars of the middle and bottom spaces can be driven in and out when the top spaces are lifted.

2. Characteristics

- 1 Less land occupation. Take full use of the underground space.
- 2 Multi-row design is available to increase the number of parking spaces.
- 3 Having functions of dustproof, rain proof and burglar proof.
- 4 Simple and reliable, easy for operation; Flowers and grass could be planted on the top floor to increase the green land area.
- 5 Designed as full packing, half packing, simple packing and naked packing for outer packing style.
- 6 Have no influence on buildings lighting.

3. Parameters

Drive mode	hydraulic	
Car size (L×W×H)	sedans≤5m×1.85m×1.55m	
	SUV≤5m×1.85m×2.05 m(ground floor)	
	Large sedan≤5.3m ×1.95m ×1.55m	
Car weight	≤2000kg or ≤2300kg	
Motor power & speed	3 floors: 7.5kw 3.6-8m/min	4 floors: 11kw 5-6m/min
Operation mode	IC card/ key board/ manual	
Access mode	Forward in, backward out	
Power supply	3 phase 5 wires 380V 50Hz	





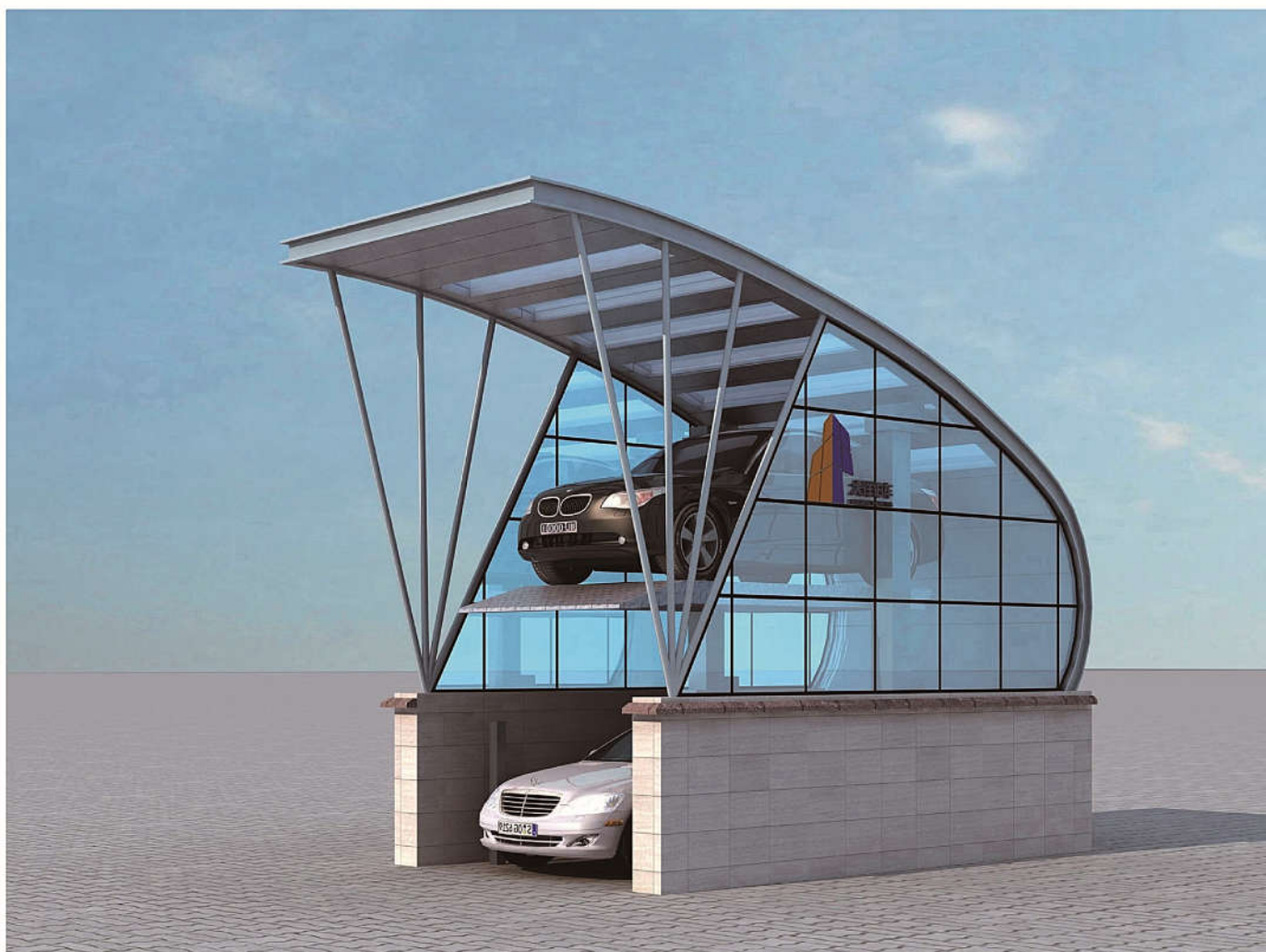
Easy parking car lift

1、Working principle

The easy parking car lift is divided into Lingbo-I, Lingbi-II and Ningbo. The parking equipment includes 2 car parking spaces, the upper one and the lower one. The lower car can be driven in and out directly. The lower car needs to be driven away before parking or retrieving the upper car.

2、Parameters

Type	Lingbo-I	Lingbo-II	Ningbo
Equipment size (L×W×H)	5.7m×2.5m×4m	6.2m×2.5m×3.1m	6.12m×2.55m×3m
Drive mode	Motor+ wire rope	hydraulic	Motor+ chain
Car size (L×W×H)	sedan≤5m×1.85m×1.55m	sedan≤5m×1.85m×1.55m	SUV≤5m ×1.85m×1.55m
	SUV≤5m×1.85m×2.05m		
Car weight	≤2000kg		
Motor power & speed	2.2kw 4.5m/min	2.2kw 1.65 m/min	2.2kw 2.8 m/min
Power supply	3 phase 5 wires 380V 50Hz		
Drive mode	Manual		



Limited space ■ Unlimited parking

DAYANG PARKING Professional Manufacturer

Part Six Bus parking system

1、Working principle

The bus parking system is specially designed for the bus. It is like the storage of shipping containers. Each car space is a cabinet. It will achieve the bus's actions of lifting, sliding and turning by a "sky-crane".

2、Characteristics

- 1 Less land occupation. Increase the space using rate.
- 2 Multi-row design is available to increase the number of parking spaces.
- 3 Reasonable structure and simple working principle.
- 4 High lifting weight.

3、Parameters

Car siz (L×W×H)	≤12m×2.55m×3.6m		
Car weight	≤12000kg		
Motor power & speed	Lift	37kw Frequency control	Max: 15m/min
	Slide	2.2kw*2 Frequency control	Max: 30m/min
	Vertical shift	3.0kw Frequency control	Max: 30m/min
	Turn	4kw Frequency control	2.0rpm
Operation mode	IC card/ key board/ manual		
Access mode	Forward in, forward out		
Power supply	3 phase 5 wires 380V 50Hz		



Limited space ■ Unlimited parking

Part Seven Vertical rotary parking system ---- PCX

1、Working principle

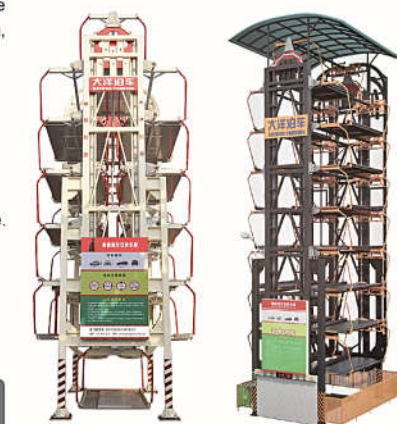
Vertical lifting parking system is a kind of system in which the carriers make circulatory movement. It consists of steel frame, carrier, driving system, control system, safety system and detecting system.

2、Characteristics

- 1 Less land occupation.
- 2 Easy operation, PLC control.
- 3 Process for examination and approval from the government is simple.
- 4 Less ancillary works, less manufacturing cost, easy to install and move.
- 5 Anti-swing devices is adapted to protect the car from swing.

3、Parameters

Number of floors	Max : 9 floors 16 car spaces	
Drive mode	Motor+ chain, Frequency control	
Car size (L×W×H)	sedan≤5.3m×1.9m×1.55m	
	SUV≤5.3m×1.9m×2.05m	
Car weight	≤2000kg	
Motor power & speed	15kw Frequency control	Max: 4.2m/min
Operation mode	IC card/ key board/ manual	
Access mode	Forward in, forward out	
Power supply	3 phase 5 wires 380V 50Hz	



Part Eight Car elevator & Turntable



Car elevator (3 stations)

1、Working principle

The car elevator is used to moving the cars between different floors. It is especially suitable for the basements that unable to set ramp way.

2、Characteristics

- 1 Take the place of ramp way. Move the cars between different floors.
- 2 The power source can be arranged flexibly.
- 3 Hydraulic drive mode. Speed controlled by hydraulic system. Safe, fast and easy to maintain.

3、Parameters

type	Car elevator
Car size (L×W×H)	≤5.3m×1.9m×1.55m
	≤5.3m×1.9m×2.05m
Car weight	≤2350kg
Motor power	7.5+7.5+7.5kw
Lifting speed	15m/min
Operation mode	IC card/ key board
Access mode	Forward in
Power supply	3 phase 5 wires 380V 50Hz



Limited space ■ Unlimited parking



Car turntable

1、Working principle

Change the direction of the car.

2、Characteristics

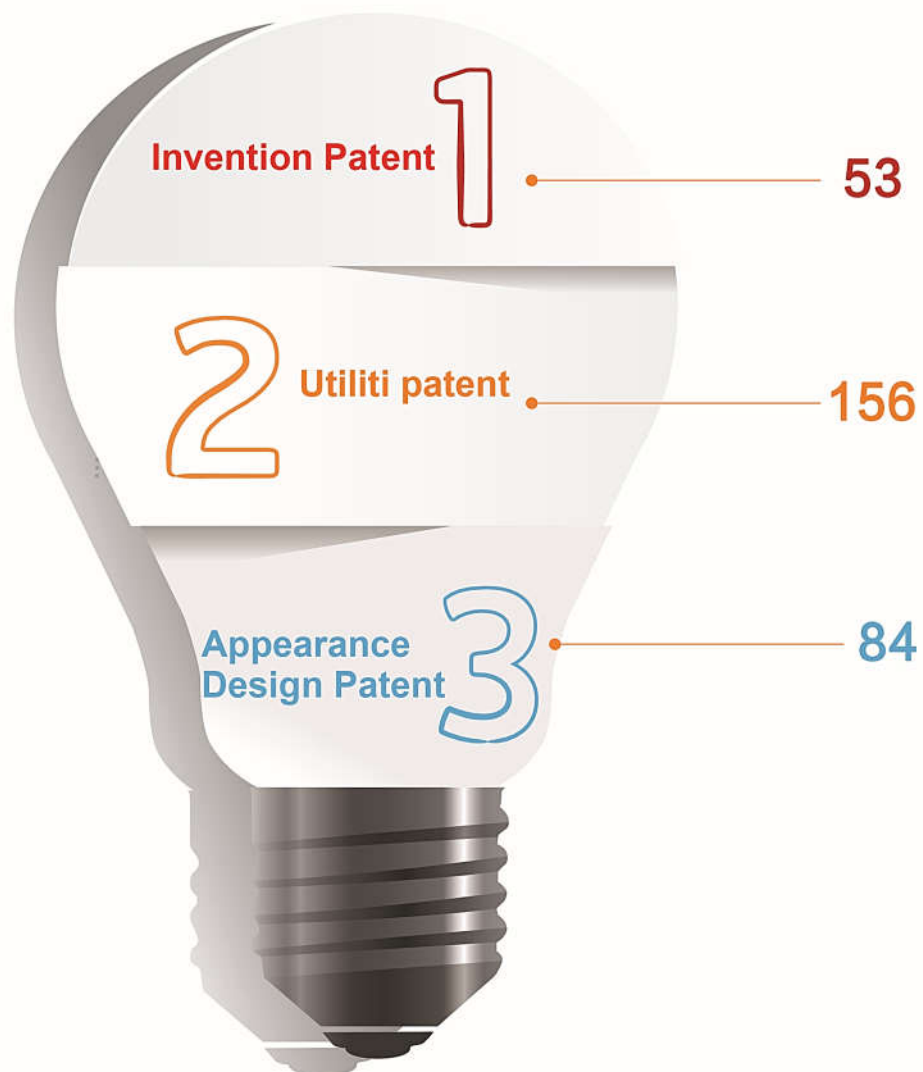
- 1 Make the car rotate at any angle.
- 2 Automatic centering.
- 3 Fully automatic control. Voice and LED screen auxiliary parking

3、Parameters

Type	Turntable
Car size (L×W×H)	≤5.3m×1.9m×1.55m
	≤5.3m×1.9m×2.05m
Car weight	≤2350kg
Turn speed	3.0rpm
Access mode	Forward in
Power supply	3 phase 5 wires 380V 50Hz



Never stop exploring. Dayang Parking Co., Ltd.
has owned almost 300 patents.



Limited space ■ Unlimited parking

DAYANG PARKING Professional Manufacturer



To create the future with wisdom, to serve the world with heart.
Small space, large pattern, the society with DAYANG will be more grateful.